

CERTIFIED LAND CORNER RECORDATION

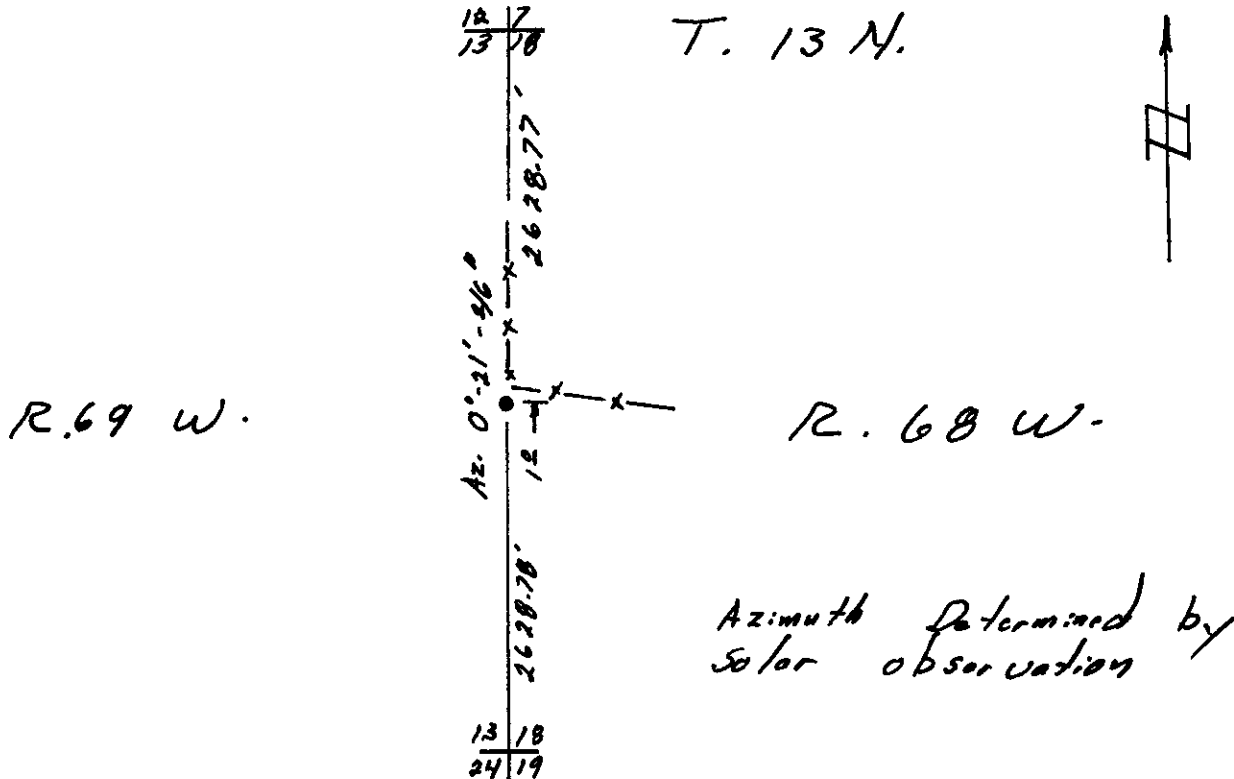
DESCRIPTION OF CORNER EVIDENCE FOUND, AND ORIGINAL RECORD (if known)

*1/4 corner sections 13 & 18 T. 13 N., R 68-69 W.
6th P.M.
Nothing Found*

DESCRIPTION OF MONUMENT AND ACCESSORIES ESTABLISHED TO PERPETUATE THE ORIGINAL LOCATION OF THIS CORNER:

*set 5/8" x 18" Rebar with Plastic Cap (CSSA L.S. 566)
set by single proportion - stake & latk set @ corner*

SKETCH, WITH COURSE AND DISTANCE TO ADJACENT CORNER IF DETERMINED IN THIS SURVEY.
(May Sketch or Paste Reproduction on Reverse Side.)

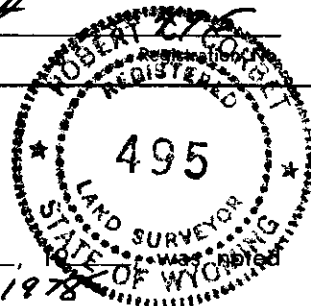


I, Robert C. Corbet certify that I have carefully performed or reviewed the work done on the diagrammed corner as reported on this recordation form and approve the same.

Robert C. Corbet
Signature of Surveyor

STATE OF WYOMING,
Office of Clerk and Recorder,
County of Sarassee

496609



This "corner record" was filed for record on the 22 day of August on the cross-index plat and is assigned page No. _____, in book No. _____

James C. Whitehead
County Official

Cross Index No. _____	T. _____	R. _____	Mer. _____
_____	T. _____	R. _____	Mer. _____
_____	T. _____	R. _____	Mer. _____
_____	T. _____	R. _____	Mer. _____
_____	T. _____	R. _____	Mer. _____
_____	T. _____	R. _____	Mer. _____
_____	T. _____	R. _____	Mer. _____

496609

Photographed.....

Indexed.....

Filed.....

Assessed.....